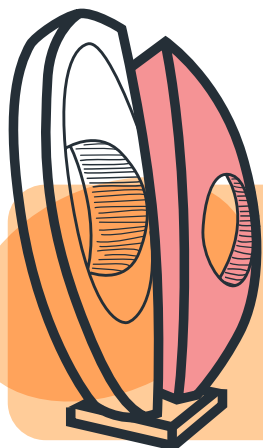
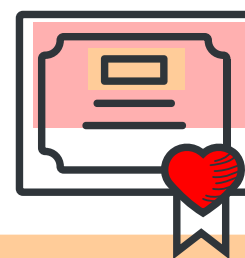




New, stricter, lockdown rules are now in force across the UK. At the University of Bolton you can be assured that:



- No student will be disadvantaged academically.
- The University will be as flexible as possible.
- A wide range of academic and pastoral support is available.



Presence on Campus (Until 22nd February)

- **Health** and **Teacher Education** students only.
- Plus any student without appropriate access to online study at home or their local accommodation, including Orlando Halls.

Assessments

The University will be flexible about arrangements for assignments.

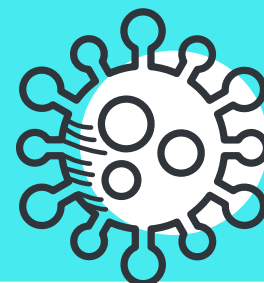
Where necessary, practical sessions will be rescheduled or amended for online delivery.

Further details will be made available by programme leaders.

Covid Tests before visiting Campus

- Seek a COVID-19 Test local to where you live, or
- Use the University asymptomatic testing facility at Bolton One
- Book a test:

[Test on Return Programme - University of Bolton](#)



Teaching

Online until 22nd of February (subject to government's policy), with the exception of the Health and Teacher Education students.



International Students

If you are already outside the UK, **please stay put** and attend your courses online until lockdown is relaxed.

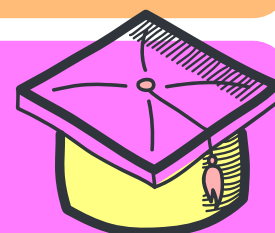
New International Students

Start your studies online. You will be contacted with details of arriving in the UK.

Graduation

- **Please continue to study online and submit assignments.**

Final year students who miss some practical study sessions, will still be able to graduate. After graduation some practical study sessions missed will be **available for free** when lockdown restrictions are lifted and circumstances allow ... and this could be combined with further postgraduate studies.





Student Services

Open for essential purposes from 8:45am to 5pm Monday-Friday.

Unable to visit? Call **01204 903733** or email: studentadvisors@bolton.ac.uk

Academic Advice / Pastoral Support: <https://libguides.bolton.ac.uk/student-services>



Extra Support

If you are self-isolating or have tested positive for COVID-19 the University has support packages to help. Including click and deliver hot meals daily Monday to Friday (£1 each).

Email: studentadvisors@bolton.ac.uk or Telephone: **01204 903733** for details.

International Students Support

Exclusive service, contact:

M.Vyas@bolton.ac.uk or

S.Yasmeen@bolton.ac.uk

studentadvisors@bolton.ac.uk

Mental Health Support

Life Lounge open from 8:45am until 5pm

Monday-Friday by appointment:

Email: lifelounge@bolton.ac.uk, or

Telephone: 01204 903566.

Online mental health and wellbeing resources can be accessed at:

<https://libguides.bolton.ac.uk/lifelounge>

Register for Life Lounge:

Life Lounge - Student Support

<https://www.bolton.ac.uk/student-life/student-support/life-lounge>

Other support

Umii: a social platform exclusively for University of Bolton students to talk to peers. Download the Umii app from Apple Google Play Stores, search for UMII and create an account using your @bolton.ac.uk email address.

TogetherAll: free and confidential platform accessible 24 hours a day, 365 days a year.

<https://togetherall.com/en-gb>

SHOUT: a confidential and free crisis text service. Text SHOUT to 85258 at any time for support.

Samaritans: Tel: 116 123

Library



Open from 9am-5pm for essential purposes only.

Individual study spaces are available:

- ✓ To students without appropriate access to online study facilities at home or in their local accommodation.
- ✓ Where students need to attend campus individual study spaces for their wellbeing and mental health.

Study at home and make use of online learning resources (*see below for details*)

Controlled click and collect and browse services remain available.

- Book an individual study space
- Book a collection/return/browse slot
- Laptop loan are available where essential

Online resources and support:

- Discover@Bolton
- Online Library Chat 9am-5pm Monday-Friday
- Book an appointment with an Academic Librarian
- Subject Guides
- Frequently Asked Questions